



Are you doing all you can to protect your employees?

The International SOS Incident Management Center is your single and most valuable resource to help you make informed decisions about incidents that can affect your employees, impact your operation, or disrupt your organization. Whether an event occurs down the street or halfway around the world, the Incident Management Center is a turnkey solution that will support and drive the process of day-to-day human risk management within your organization.

The Incident Management Center is a web-based application that captures and collects information through an easy-to-use, highly intuitive user interface. The interface gives you maximum visibility of employees, facilities and the events affecting them 24 hours a day, 7 days a week.

You can evaluate the impact of events on your assets and communicate immediately with them then plan, track and respond in real time, as events unfold.

As the world leader in medical and security assistance services, International SOS provides your organization with unsurpassed support through our global presence and infrastructure. Our global assistance services, in conjunction with the Incident Management Center, ensure the well-being of your employees.

"By integrating formerly siloed critical systems under one common platform, the Incident Management Center streamlines processes, significantly reducing consumption of corporate resources."

Director, Health, Safety and Security

Plan, Track and Respond via the Incident Management Center

Plan

With the Incident Management Center you can automatically gather up-to-the-minute global information, through exclusive International SOS security and medical alerts about developments that could affect the health and security of your employees and have an impact on your organization.

Then, you can securely add information relative to critical assets and documentation - including employees, expatriates, critical contacts, facilities, response plans, and operating procedures - to one secure location accessible worldwide.

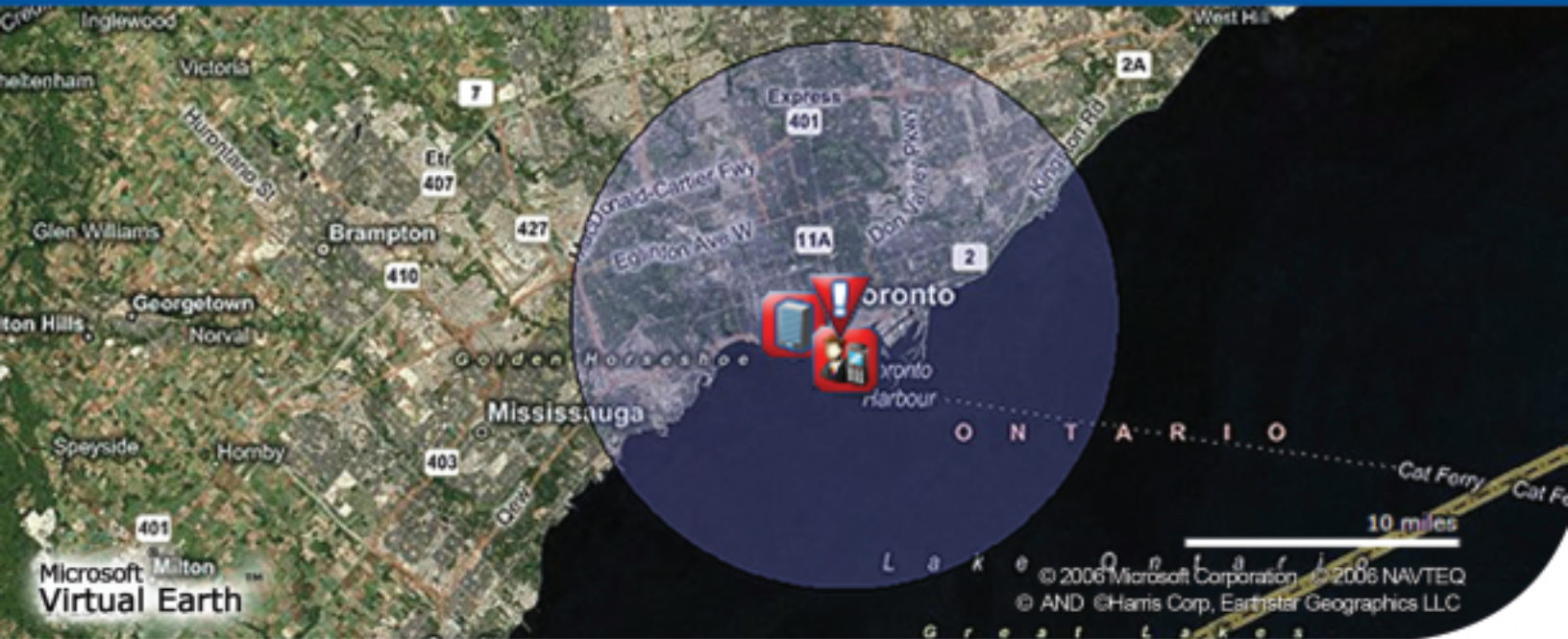
For more information, please contact

Philadelphia 1-800-523-8661

onlinesales@internationalsos.com

Worldwide reach Human touch

Incident Management Center



"By integrating critical systems, given an incident affecting the organization globally, affected staff can be immediately notified en masse without lag time or overlooking key individuals." - Vice President, Security

Track

Using state-of-the-art mapping technology, the Incident Management Center enables you to instantaneously and precisely locate events that could impact your company. You can quickly zoom into those locations and monitor events to determine their impact on your business, and immediately analyze information allowing the continued and safe operation of your organization. All the while you can make sure standard operating procedures are followed and appropriate action is taken.

Respond

With the Incident Management Center you can rapidly evaluate the impact of events and communicate status. Whether by email, SMS, text-to-voice, or fax, you can guarantee the delivery of the right information to the right people at the right time. With this state-of-the-art messaging, your affected assets can be alerted to ensure that they are aware of the impact of events.

Trust

International SOS is the only fully-integrated provider of medical and security assistance services to have both TRUSTe and Safe Harbor certification. You can be assured that we adhere to the highest standards of data privacy in the world.

Services

Included

- 24/7 Secure Access
- Integrated International SOS Medical and Security Alerts
- Integrated Weather Alerts - NEW!
- 24/7 Access to International SOS Worldwide Medical and Security Networks
- Self Administration Tool
- Role-based Access for Asset Management - NEW!
- Customized Asset Grouping
- Geo-spatial Identification of Assets and Events
- Document Storage

- Impact Radius Correlation between Events and Assets
- Customized Risk Ratings for Assets
- Integrated Email Messaging
- Automated Event Notification via Email
- Satellite, City and Street mapping provided by Microsoft® Virtual Earth™

Optional

- Traveler Data Integration
- Comprehensive Communication Platform including Global Text Messaging (SMS), Text-to-Voice and Fax
- Security and Medical Consulting Services

Additional Information

For additional information on the Incident Management Center, please contact your Regional Sales Director or email [International SOS Online](mailto:internationalsos.com) at onlinesales@internationalsos.com.

For more information, please contact

Philadelphia 1-800-523-8661
onlinesales@internationalsos.com

Produced in February 2009

Worldwide reach Human touch